

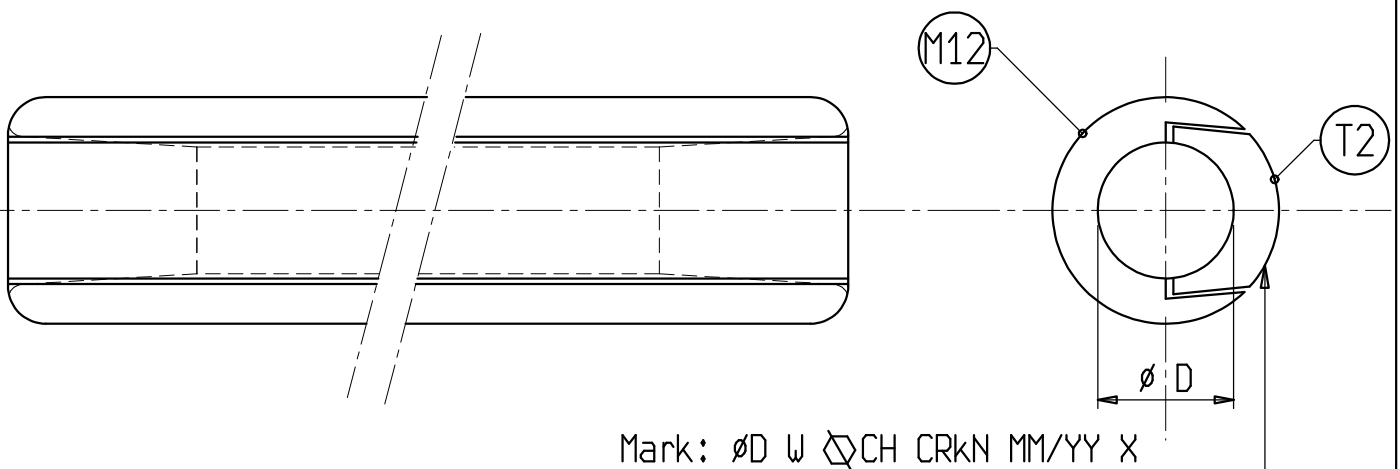
s.r.l. GORLA
MORSETTERIE
MILANO

TECHNICAL OFFICE

REPAIR SLEEVES
FOR COPPER CONDUCTORS

DRG. N. AT09/CU/X

Rev.2 dated 30.08.17



Material: Copper alloy

X	ϕ COND.	W	CR [kN]	M12	T2
	D				
LS6653102	10,2		24,3	LS66542102	LS66541102
LS6653105	10,5		25,8	LS66542105	LS66541105
LS6653115	11,5		31,0	LS66542115	LS66541115
LS6653125	12,5		36,6	LS66542125	LS66541125
LS665313	13,0		39,6	LS6654213	LS6654113
LS6653	13,5		42,7	LS66542	LS66541
LS665314CH26	14,0	26	45,9	LS6654214CH26	LS6654114CH26
LS665314	14,0		45,9	LS6654214	LS6654114
LS665315	15,0		52,7	LS6654215	LS6654115