

s.r.l. GORLA  
MORSETTERIE  
MILANO

TECHNICAL OFFICE

45° CONNECTOR  
FOR CU STUD  
AND AL CONDUCTOR  
COMPRESSION TYPE

DRG. N. 26/BA/X

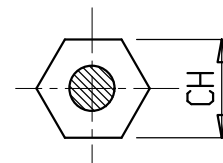
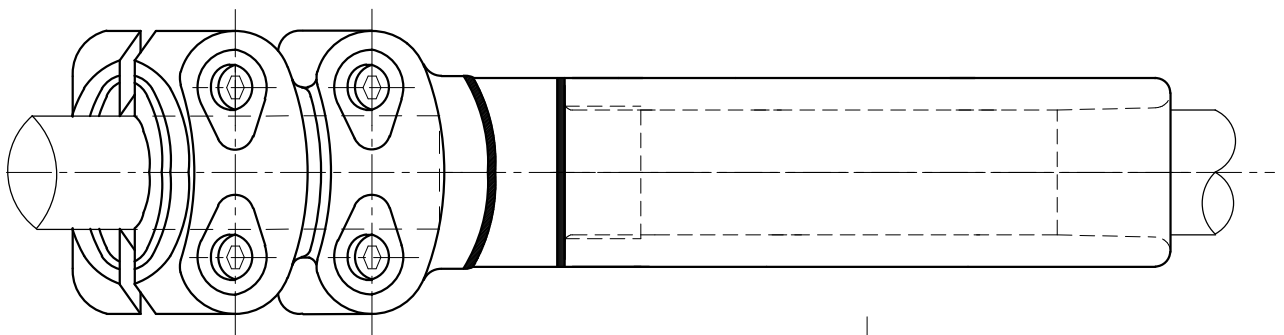
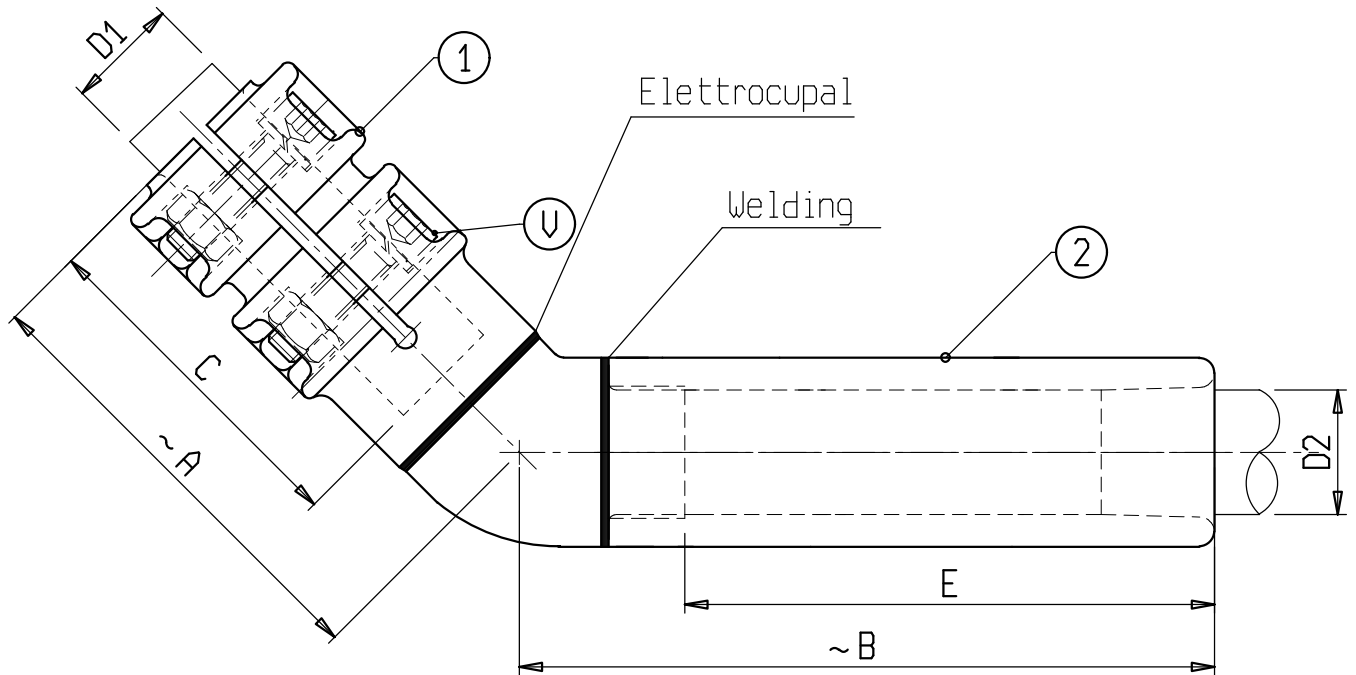
SCALE

DRAWN

DATE

APPROVED

DATE



Material: 1 Copper alloy 2 Aluminium alloy  
Bolts: Stainless steel

| X         | ∅ CONDUCTOR |           | A   | B   | C  | E   | V   | CH | X         | ∅ CONDUCTOR |           | A   | B   | C   | E   | V   | CH |
|-----------|-------------|-----------|-----|-----|----|-----|-----|----|-----------|-------------|-----------|-----|-----|-----|-----|-----|----|
|           | D1          | D2        |     |     |    |     |     |    |           | D1          | D2        |     |     |     |     |     |    |
| C 0140BAP | 30          | 23,5-27   | 120 | 180 | 80 | 145 | M10 | 44 | C 6458BAP | 40          | 27-30     | 120 | 180 | 80  | 145 | M10 | 44 |
| C 1077BA  | 30          | 27-30     | 120 | 180 | 80 | 145 | M10 | 44 | C 6783BA  | 40          | 30-32     | 120 | 180 | 80  | 145 | M10 | 44 |
| C 6784BA  | 30          | 30-32     | 120 | 180 | 80 | 145 | M10 | 44 | C 6480BA  | 40          | 35-37     | 120 | 180 | 80  | 145 | M10 | 54 |
| C 6917BA  | 30          | 35-37     | 120 | 180 | 80 | 145 | M10 | 54 | C 0182BAC | 40          | 21,5-23,5 | 160 | 180 | 120 | 145 | M10 | 44 |
| C 0292BAC | 40          | 21,5-23,5 | 120 | 180 | 80 | 145 | M10 | 44 |           |             |           |     |     |     |     |     |    |
| C 0141BAP | 40          | 23,5-27   | 120 | 180 | 80 | 145 | M10 | 44 | C 1186BAC | 40          | 35-37     | 160 | 180 | 120 | 145 | M10 | 54 |