

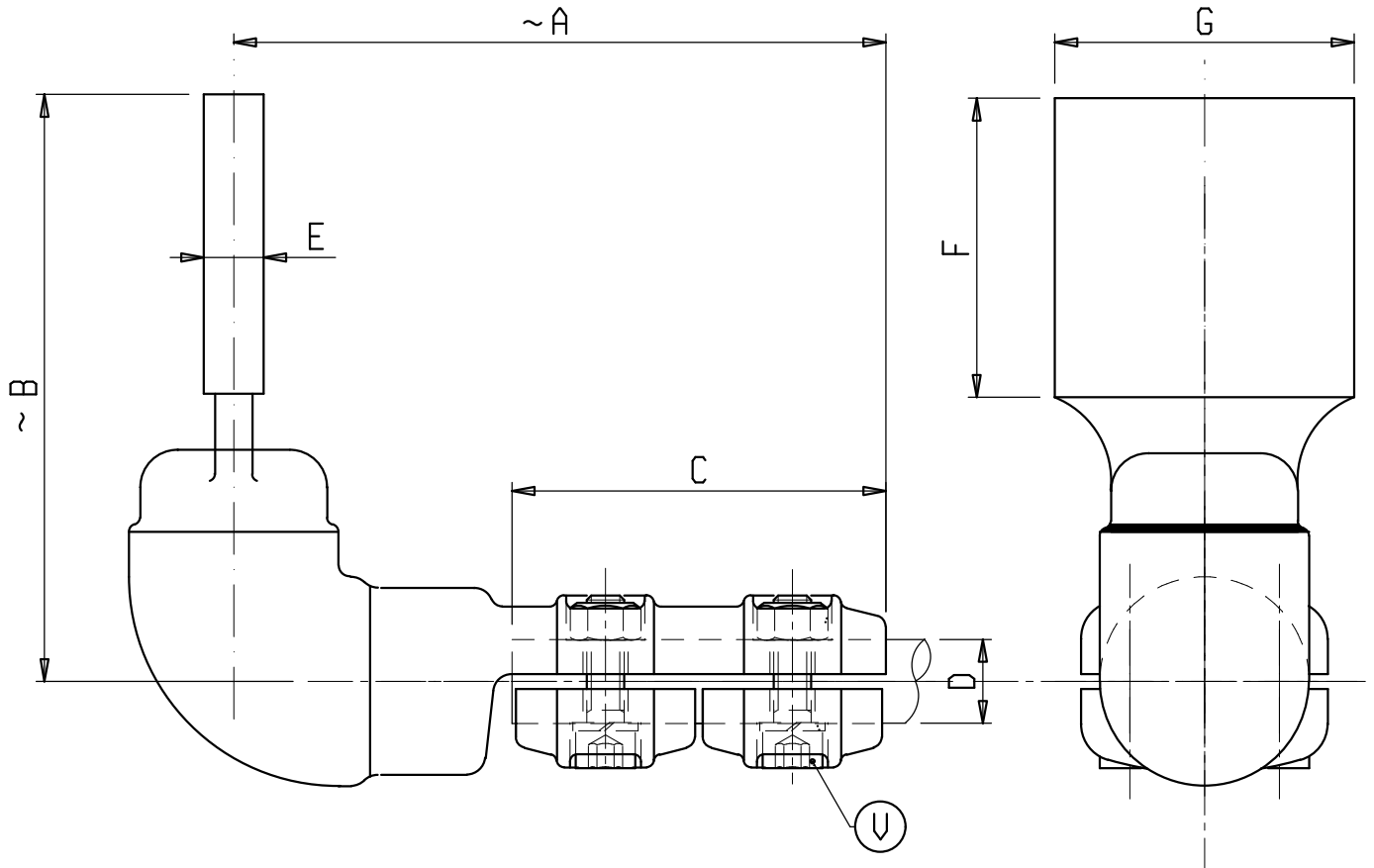
s.r.l. GORLA
MORSETTERIE
MILANO

TECHNICAL OFFICE

90° CONNECTOR
PER CU CONDUCTOR
AND CU FLAT

DRG. N. 22/BB/X

Rev.2 dated 06.12.10



Material: Copper alloy

Bolts: Stainless steel

X	∅ COND.	A	B	C	E	F	G	U	X	∅ COND.	A	B	C	E	F	G	U
	D									D							
C 0406BB	12-20	175	190	100	10	100	80	M10	C 0211BB	32-36	180	230	100	16	100	100	M10
C 0961BB	20-25	175	170	100	15	80	80	M10	C 6712BB	32-36	180	250	100	10	120	120	M10
C 6726BB	20-25	175	250	100	10	120	120	M10	C 6625BB	36-40	190	170	100	15	80	80	M10
C 0962BB	32-36	180	170	100	15	80	80	M10	C 0693BB	36-40	190	250	100	10	120	120	M10