

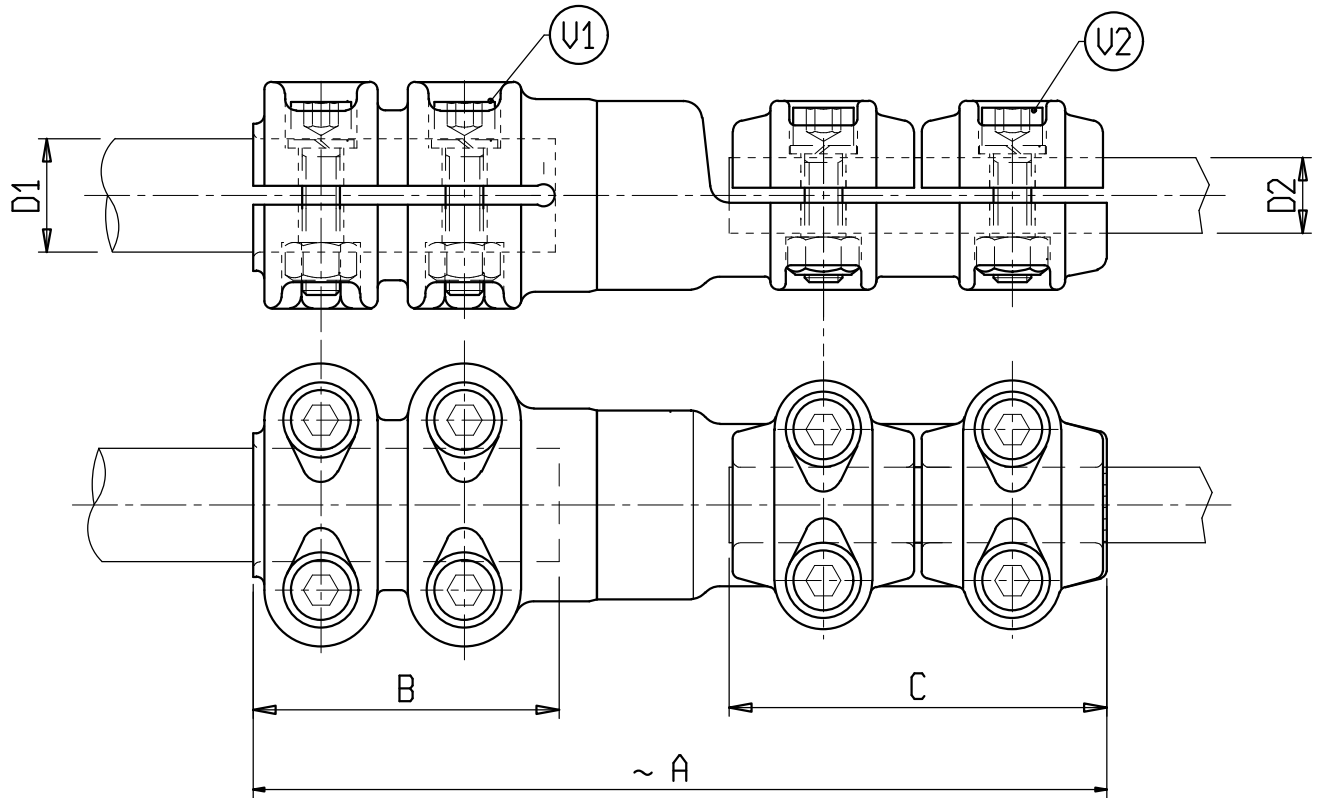
s.r.l. GORLA  
MORSETTERIE  
MILANO

TECHNICAL OFFICE

STRAIGHT CONNECTOR  
FOR Cu STUD  
AND Cu CONDUCTOR

DRG. N. 11/BB/X

Rev.1 dated 29.04.10



Material: Copper alloy  
Bolts: Stainless steel

X	∅ CONDUCTOR		A	B	C	U1	U2	X	∅ CONDUCTOR		A	B	C	U1	U2
	D1	D2							D1	D2					
C 6533BB	20	5-12	200	80	65	M10	M8	C 6448BB	30	36-40	250	80	100	M10	M10
C 6466BB	20	12-20	235	80	100	M10	M10	C 0665BB	40	5-12	200	80	65	M10	M8
C 6435BB	20	20-25	235	80	100	M10	M10	C 6223BB	40	12-20	235	80	100	M10	M10
C 0606BB	20	25-32	235	80	100	M10	M10	C 6224BB	40	20-25	235	80	100	M10	M10
C 6629BB	30	5-12	200	80	65	M10	M8	C 6274BB	40	25-32	235	80	100	M10	M10
C 6240BB	30	12-20	235	80	100	M10	M10	C 6582BB	30	25-32	295	140	100	M10	M10
C 6241BB	30	20-25	235	80	100	M10	M10	C 6714BB	40	12-20	275	120	100	M10	M10
C 6304BB	30	25-32	235	80	100	M10	M10	C 6581BB	40	25-32	305	150	100	M10	M10
C 6256BB	30	32-36	240	80	100	M10	M10								

s.r.l. GORLA  
MORSETTERIE  
MILANO

TECHNICAL OFFICE

STRAIGHT CONNECTOR  
FOR Cu STUD  
AND Cu CONDUCTOR

DRG. N. 12/BB/X

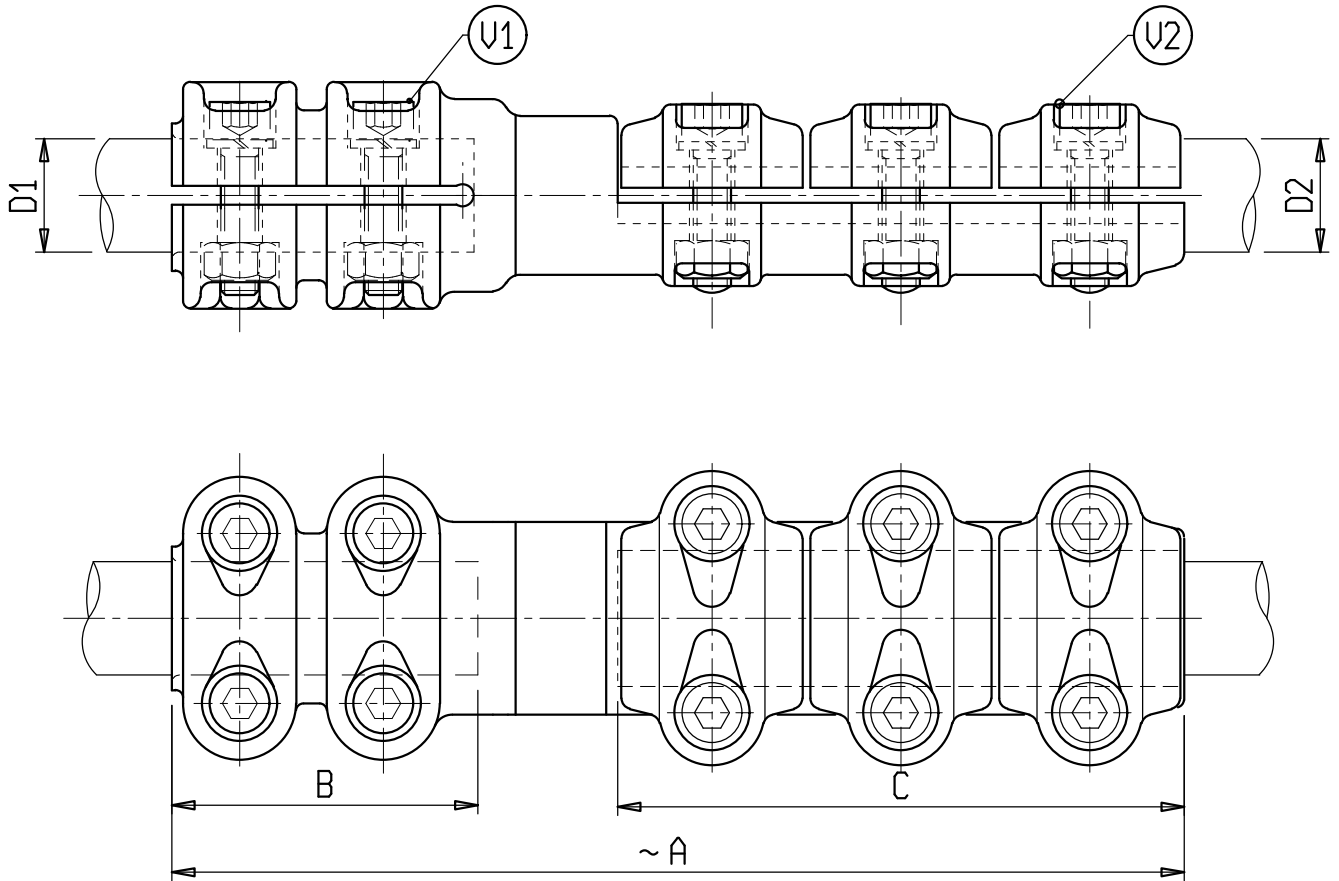
SCALE

DRAWN

DATE

APPROVED

DATE



Material: Copper alloy  
Bolts: Stainless steel

X	∅ CONDUCTOR		A	B	C	U1	U2	X	∅ CONDUCTOR		A	B	C	U	CH
	D1	D2							D1	D2					
C 0698BB	20	12-20	285	80	150	M10	M10	C 0706BB	40	12-20	285	80	150	M10	M10
C 0699BB	20	20-25	285	80	150	M10	M10	C 0707BB	40	20-25	285	80	150	M10	M10
C 0700BB	20	25-32	285	80	150	M10	M10	C 6396BR	40	25-32	285	80	150	M10	M10
C 0701BB	20	32-36	290	80	150	M10	M10	C 6399BB	40	32-36	290	80	150	M10	M10
C 6424BB	30	12-20	285	80	150	M10	M10	C 1297BB	30	32-36	330	120	150	M10	M10
C 6721BB	30	20-25	285	80	150	M10	M10	C 1296BB	40	32-36	330	120	150	M10	M10
C 6516BB	30	25-32	285	80	150	M10	M10								
C 6711BB	30	32-36	290	80	150	M10	M10								

