

s.r.l. GORLA  
MORSETTERIE  
MILANO

TECHNICAL OFFICE

STRAIGHT CONNECTOR  
FOR A1 STUD  
AND A1 CONDUCTOR

DRG. N. 11/AA/X

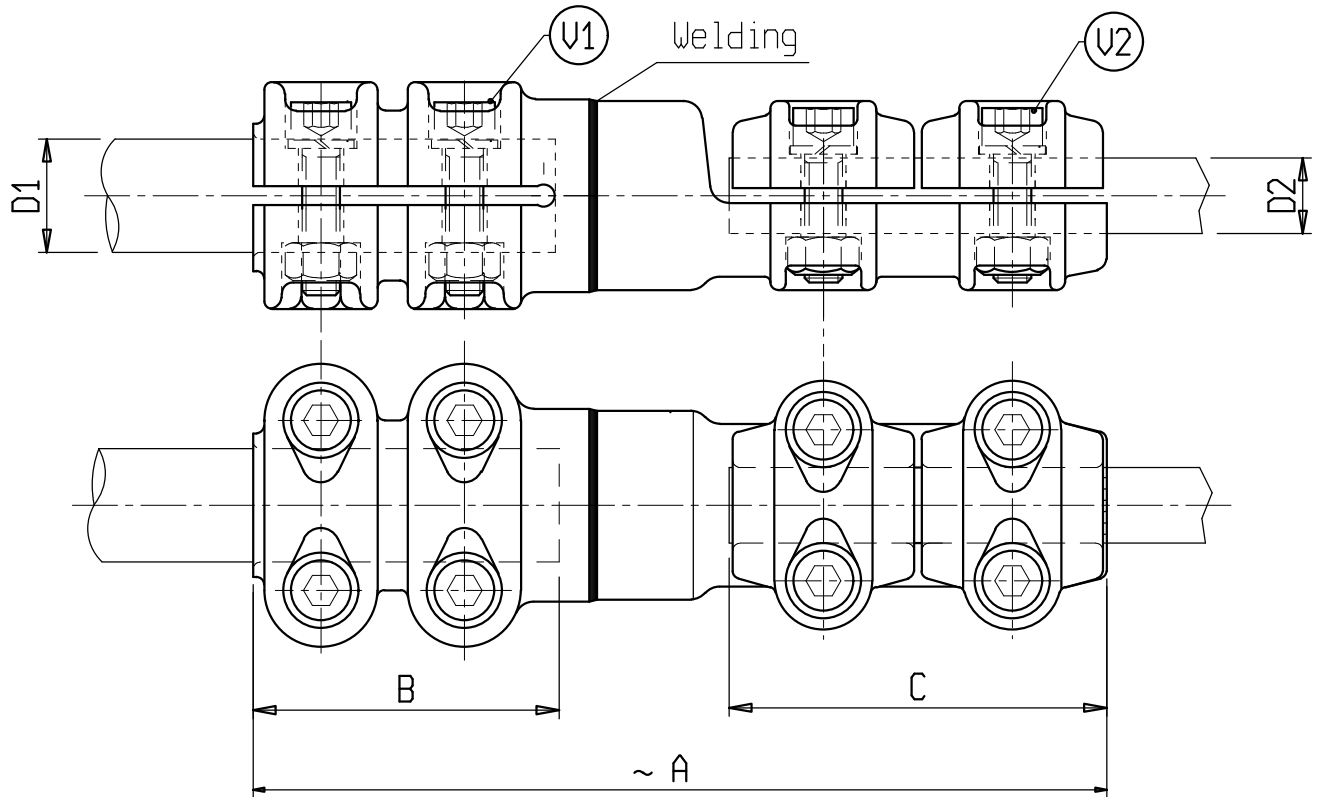
SCALE

DRAWN

DATE

APPROVED

DATE



Material: Aluminium alloy

Bolts: Stainless steel

X	∅ CONDUCTOR		A	B	C	U1	U2	X	∅ CONDUCTOR		A	B	C	U	CH
	D1	D2							D1	D2					
C 6533AA	20	5-12	200	80	65	M10	M8	C 6224AA	40	20-25	235	80	100	M10	M10
C 6466AA	20	12-20	235	80	100	M10	M10	C 6274AA	40	25-32	235	80	100	M10	M10
C 6435AA	20	20-25	235	80	100	M10	M10	C 6253AA	40	32-36	240	80	100	M10	M10
C 0606AA	20	25-32	235	80	100	M10	M10	C 6352AA	40	36-40	250	80	100	M10	M10
C 6681AA	20	32-36	240	80	100	M10	M10	C 0695AA	40	45-50	250	80	105	M10	M10
C 0660AA	20	36-40	250	80	100	M10	M10	C 6626AA	40	55-60	250	80	105	M10	M10
C 6629AA	30	5-12	200	80	65	M10	M8	C 6582AA	30	25-32	295	140	100	M10	M10
C 6240AA	30	12-20	235	80	100	M10	M10	C 6680AA	40	32-36	260	100	100	M10	M10
C 6241AA	30	20-25	235	80	100	M10	M10	C 6714AA	40	12-20	275	120	100	M10	M10
C 6304AA	30	25-32	235	80	100	M10	M10	C 6734AA	40	32-36	280	120	100	M10	M10
C 6256AA	30	32-36	240	80	100	M10	M10	C 6581AA	40	25-32	305	150	100	M10	M10
C 6448AA	30	36-40	250	80	100	M10	M10	C 6950AA	50	32-36	250	80	100	M10	M10
C 6510AA	30	45-50	250	80	105	M10	M10	C 6669AA	60	55-60	290	120	105	M10	M10
C 6565AA	30	55-60	250	80	105	M10	M10	C 6481AA	80	32-36	280	120	100	M10	M10
C 0665AA	40	5-12	200	80	65	M10	M8								
C 6223AA	40	12-20	235	80	100	M10	M10								

s.r.l. GORLA  
MORSETTERIE  
MILANO

TECHNICAL OFFICE

STRAIGHT CONNECTOR  
FOR A1 STUD  
AND A1 CONDUCTOR

DRG. N. 12/AA/X

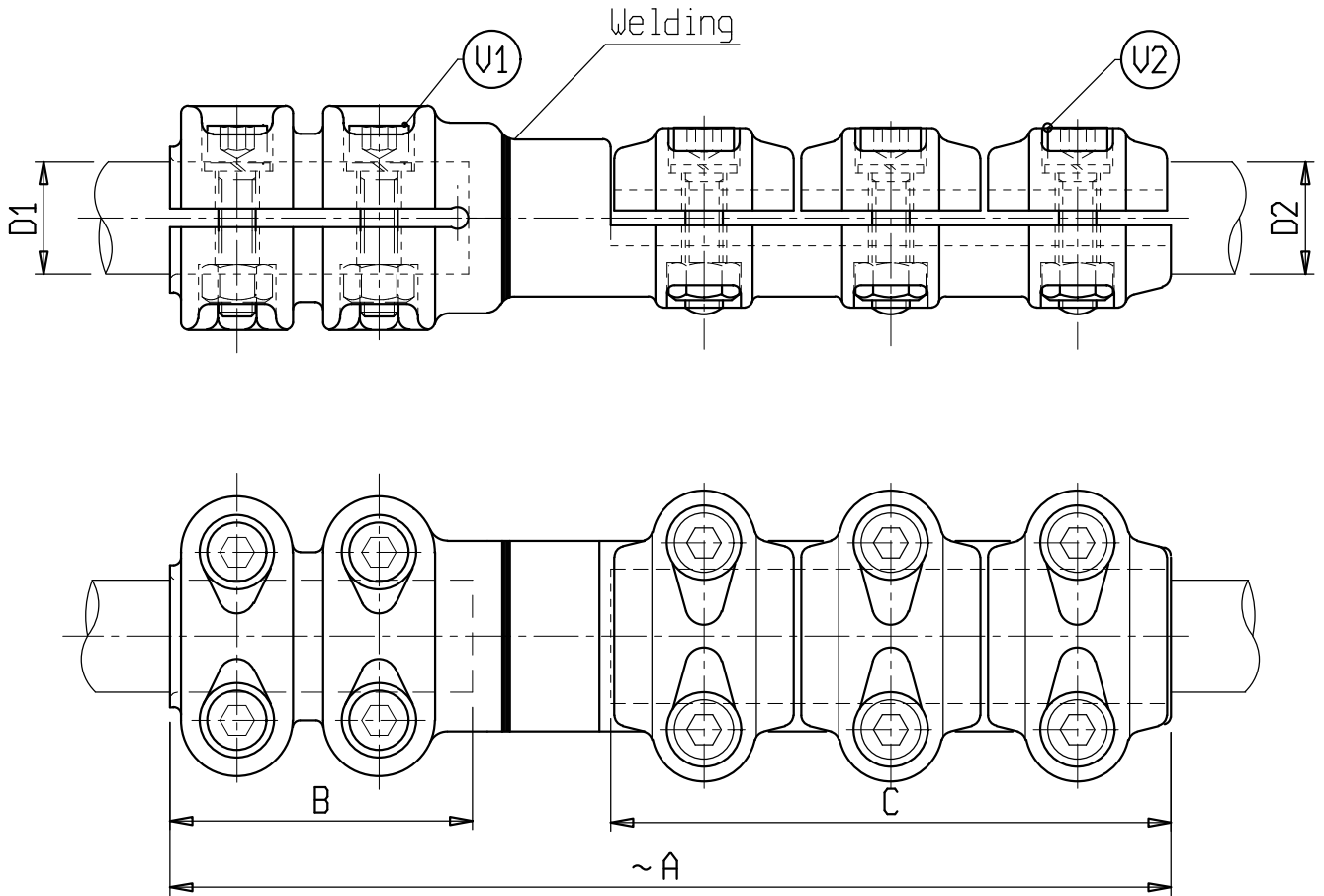
SCALE

DRAWN

DATE

APPROVED

DATE



Material: Aluminium alloy  
Bolts: Stainless steel

X	∅ CONDUCTOR		A	B	C	U1	U2	X	∅ CONDUCTOR		A	B	C	U	CH
	D1	D2							D1	D2					
C 0698AA	20	12-20	285	80	150	M10	M10	C 6711AA	30	32-36	290	80	150	M10	M10
C 0699AA	20	20-25	285	80	150	M10	M10	C 0706AA	40	12-20	285	80	150	M10	M10
C 0700AA	20	25-32	285	80	150	M10	M10	C 0707AA	40	20-25	285	80	150	M10	M10
C 0701AA	20	32-36	290	80	150	M10	M10	C 6396AA	40	25-32	285	80	150	M10	M10
C 0702AA	20	36-40	300	80	150	M10	M10	C 6399AA	40	32-36	290	80	150	M10	M10
C 6424AA	30	12-20	285	80	150	M10	M10	C 1297AA	30	32-36	330	120	150	M10	M10
C 6721AA	30	20-25	285	80	150	M10	M10	C 1296AA	40	32-36	330	120	150	M10	M10
C 6516AA	30	25-32	285	80	150	M10	M10								

