

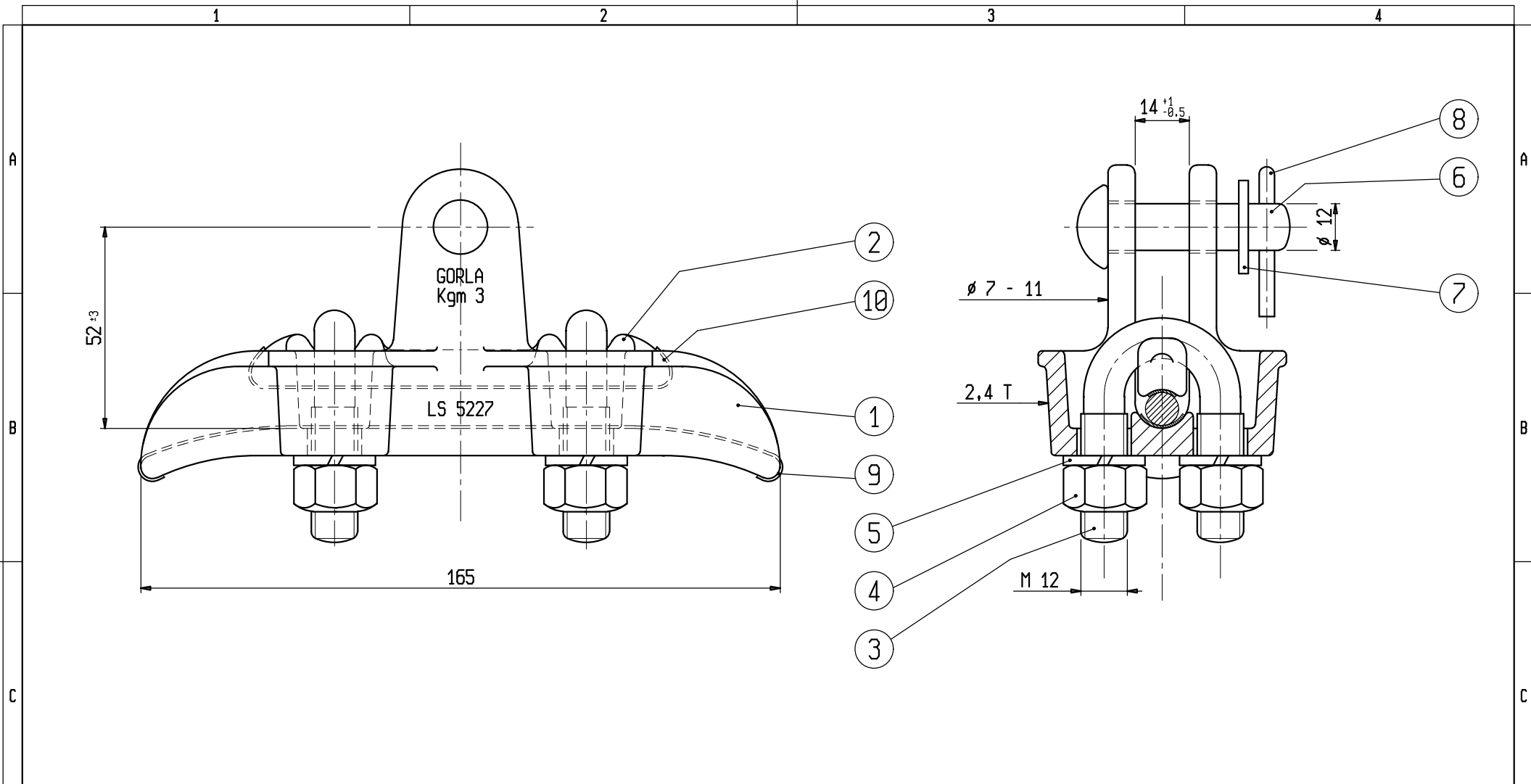
8	PIN A 4x25	791	1	ST.STEEL	
7	WASHER 14x24	5935	1	STEEL	
6	PIN \varnothing 12x45	789	1	STEEL	HOT DIP GALV.D (ISO 1461)
5	SPRING WASHER A 8	3446	4	ST.STEEL	
4	NUT M8	3455DAD	4	ST.STEEL	
3	U-BOLT M8x20x40	1206	2	ST.STEEL	
2	KEEPER	LS 1205 BR	1	CU ALLOY	
1	CLAMP	LS 6941 BBI	1	CU ALLOY	
ITEM	DESCRIPTION	N° DRG.	N° PCS.	MATERIAL	NOTE

s.r.l. GORLA
MORSETTERIE
MILANO
TECHNICAL OFFICE

SUSPENSION CLAMP
FOR CU AND COPPERWELD
CONDUCTORS \varnothing 4 - 7 mm
BREAKING LOAD 11 kN

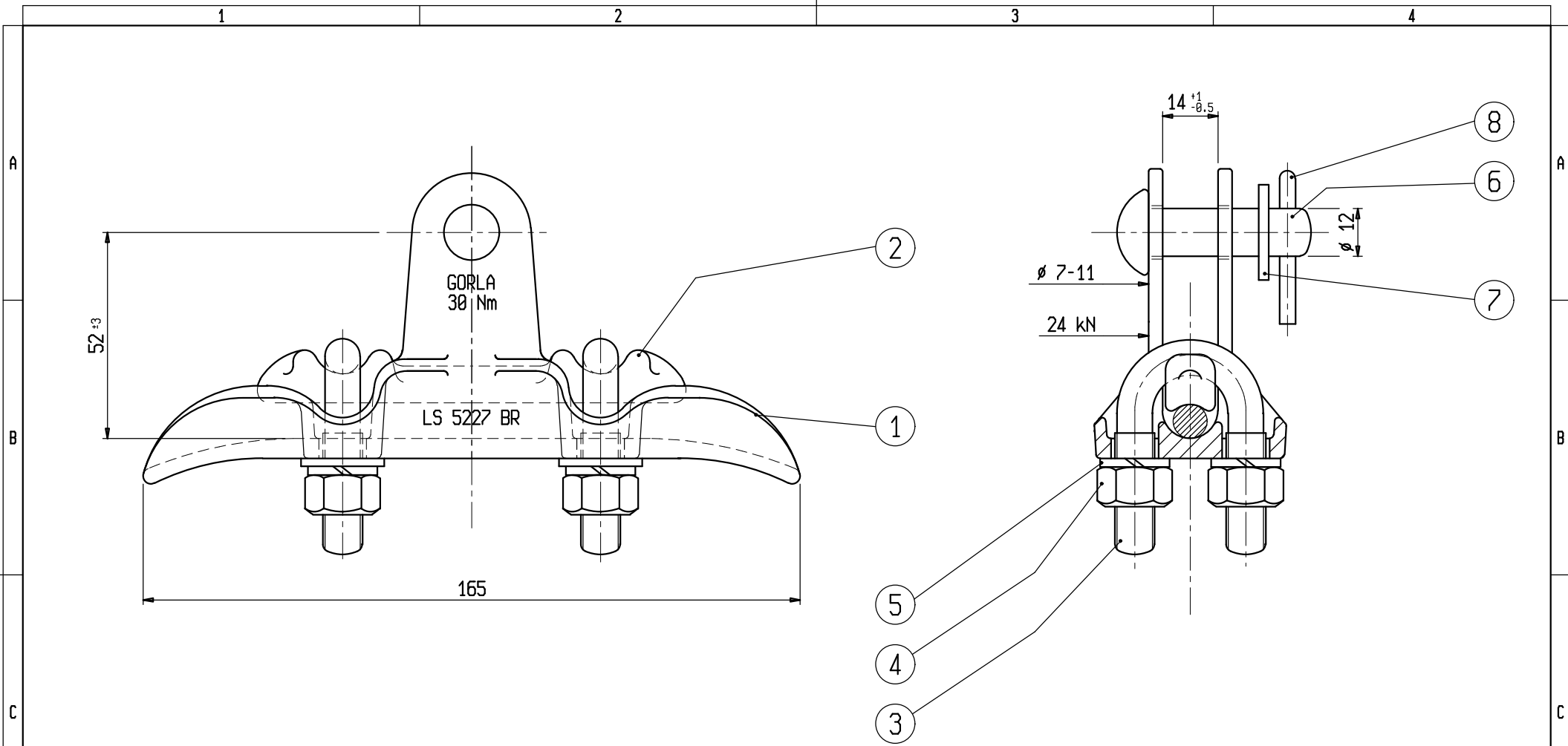
Rev.1 dated 14.09.06

DRG. N.LS 6941BR



10	KEEPER LINER	608/1	1	COPPER	
9	CLAMP LINER	607/1	1	COPPER	
8	PIN A 4x25	791	1	ST. STEEL	
7	WASHER 14x24	787	1	STEEL	HOT DIP GALV.D (ISO 1461)
6	PIN ϕ 12x45	789	1	STEEL	HOT DIP GALV.D (ISO 1461)
5	SPRING WASHER A 13	4430	4	ST. STEEL	
4	NUT M12	3288	4	ST. STEEL	
3	U-BOLT M12x60	3863	2	STEEL	
2	KEEPER	LS 1160	1	STEEL	HOT DIP GALV.D (ISO 1461)
1	CLAMP	LS 5227 BIS	1	CAST IRON	HOT DIP GALV.D (ISO 1461)
ITEM	DESCRIPTION	N° DRG.	N° PCS.	MATERIAL	NOTE

<p>s.r.l. GORLA MORSETTERIE MILANO</p> <p>TECHNICAL OFFICE</p>	<p>SUSPENSION CLAMP FOR Cu AND COPPERWELD CONDUCTORS ϕ 7 - 11 mm BREAKING LOAD = 24 kN</p>	Rev.1 dated 14.09.06
		DRG. N. LS 5227

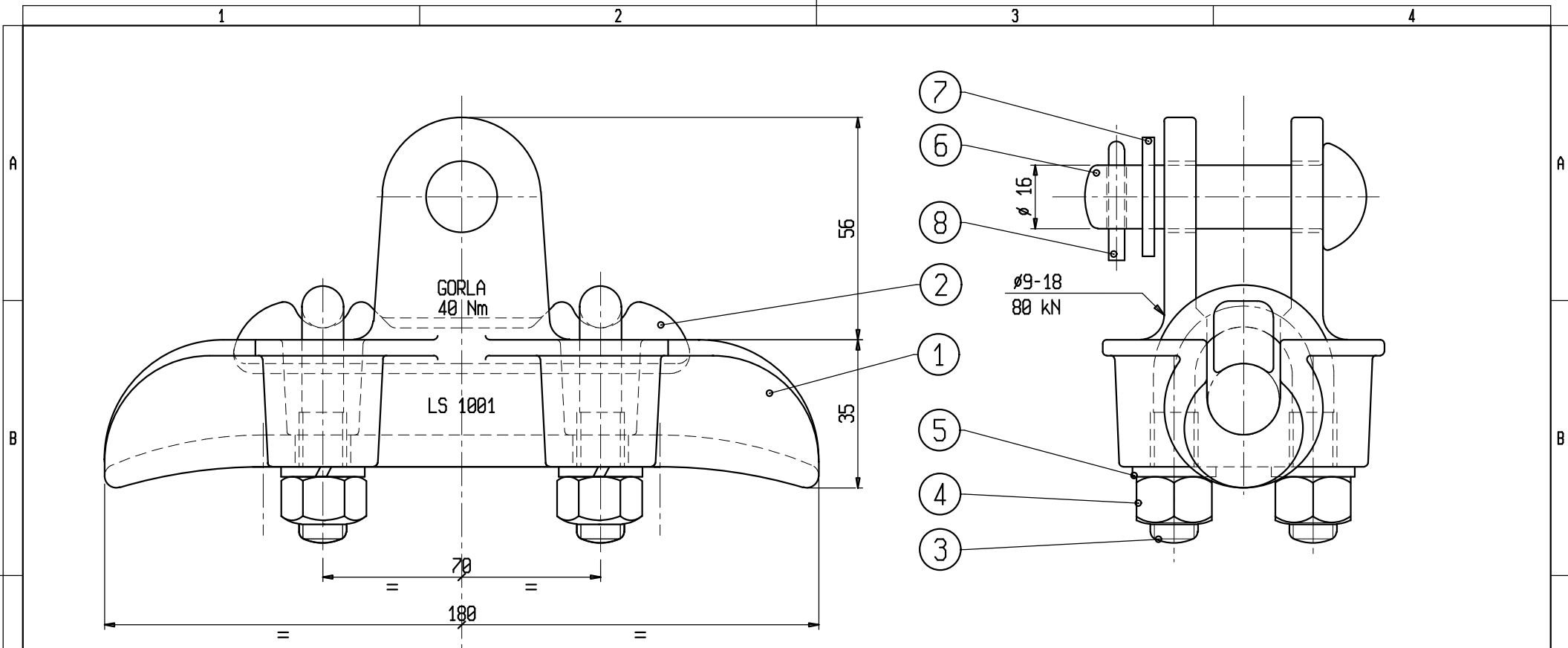


8	PIN A 4x25	791	1	ST.STEEL	
7	WASHER 14X24	5935	1	ST.STEEL	
6	PIN ϕ 12x45	789	1	STEEL	HOT DIP GALV.D (ISO 1461)
5	SPRING WASHER A 10	710	4	ST.STEEL	
4	NUT M10	3316	4	ST.STEEL	
3	U-BOLT M10x55	4169	2	ST.STEEL	
2	KEEPER	LS 1160 BR	1	Cu ALLOY	
1	CLAMP	LS 5227 BR	1	Cu ALLOY	
ITEM	DESCRIPTION	N° DRG.	N° PCS.	MATERIAL	NOTE

s.r.l. GORLA
MORSETTERIE
MILANO
TECHNICAL OFFICE

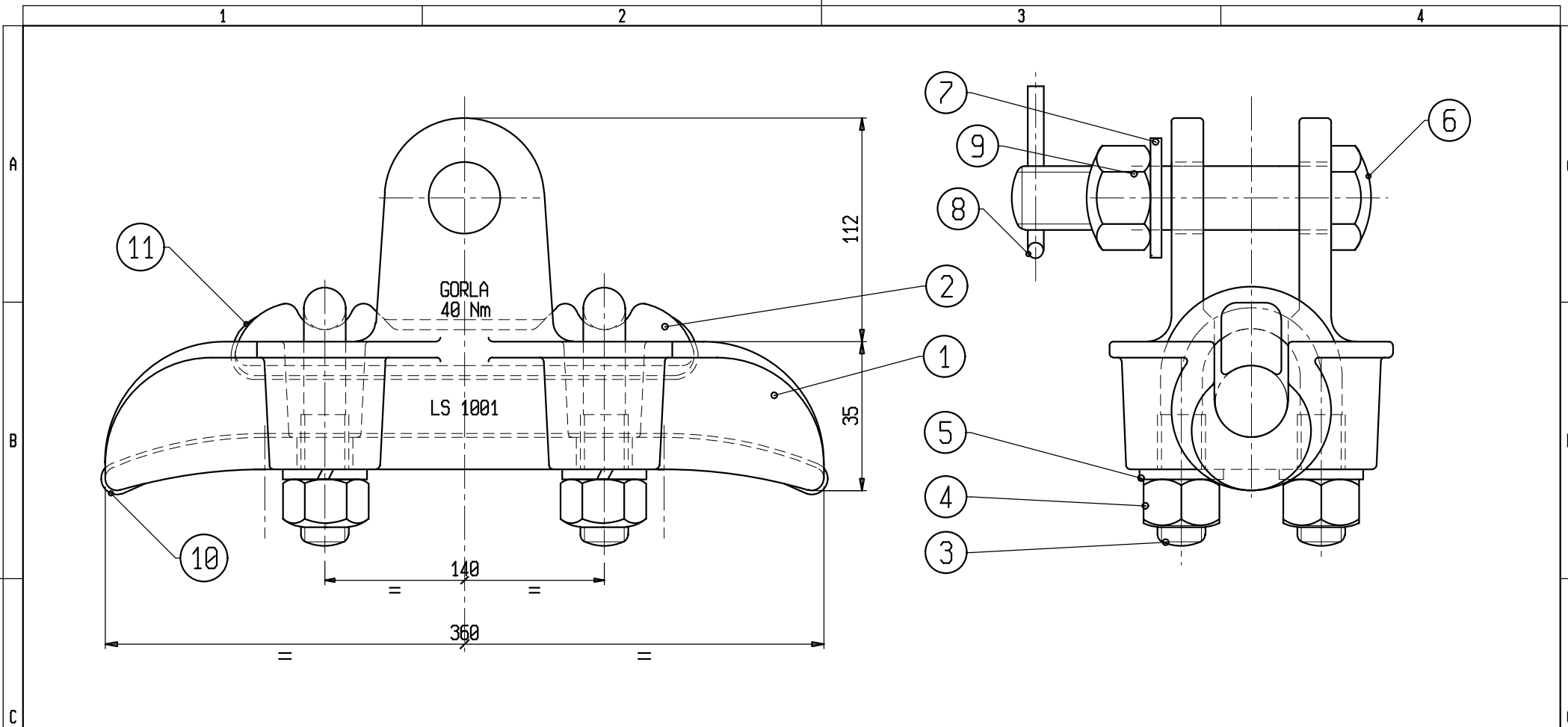
SUSPENSION CLAMP
FOR Cu AND COPPERWELD
CONDUCTORS ϕ 7 - 11 mm
BREAKING LOAD = 24 kN

Rev.1 dated 14.09.06
DRG. NLS 5227BR



8	PIN A 4x25	791	1	STAINLESS STEEL	
7	WASHER 18x30	776	1	STEEL	HOT DIP GALV.D (ISO 1461)
6	PIN ø16x60	2692	1	STEEL	HOT DIP GALV.D (ISO 1461)
5	SPRING WASHER A 13	4430	4	STAINLESS STEEL	
4	HEX. NUT M12	3288	4	STAINLESS STEEL	
3	U-BOLT M12x65	3290	2	STEEL	HOT DIP GALV.D (ISO 1461)
2	KEEPER	LS 2897	1	STEEL	HOT DIP GALV.D (ISO 1461)
1	SUSPENSION CLAMP	LS 1001 BIS	1	CAST IRON	HOT DIP GALV.D (ISO 1461)
ITEM	DESCRIPTION	DRAWING N°	N° PCS.	MATERIAL	NOTE

DATE	MODIFICATIONS	DRAWER	APPROVED
s.r.l. GORLA MORSETTERIE MILANO TECHNICAL OFFICE		SCALE	
		DRAWER	DATE
SUSPENSION CLAMP FOR Cu CONDUCTORS ø 9 - 18 mm R= 80 kN		APPROVED	DATE
		DRW. N. LS 1001	



11	KEEPER LINER	6044CU	1	COPPER	
10	CLAMP LINER	6042CU	1	COPPER	
9	HEX. NUT M16	5953	1	STEEL	HOT DIP GALV.D (ISO 1461)
8	PIN A 4x36	802	1	STAINLESS STEEL	
7	WASHER 18x30	776	1	STEEL	HOT DIP GALV.D (ISO 1461)
6	BOLT M16x80	5952	1	STEEL	HOT DIP GALV.D (ISO 1461)
5	SPRING WASHER A 13	4430	4	STAINLESS STEEL	
4	HEX. NUT M12	3288	4	STAINLESS STEEL	
3	U-BOLT M12x65	3290	2	STEEL	HOT DIP GALV.D (ISO 1461)
2	KEEPER	LS 2897	1	STEEL	HOT DIP GALV.D (ISO 1461)
1	SUSPENSION CLAMP	LS 1001 BIS	1	CAST IRON	HOT DIP GALV.D (ISO 1461)
ITEM	DESCRIPTION	DRAWING N°	N° PCS.	MATERIAL	NOTE

DATE	MODIFICATIONS	DRAWER	APPROVED
s.r.l. GORLA MORSETTERIE MILANO TECHNICAL OFFICE		SCALE	
		DRAWER	DATE
SUSPENSION CLAMP WITH LINERS AND BOLT FOR Cu CONDUCTORS \varnothing 9 - 18 mm R= 80 kN		APPROVED	DATE
		DRW. N. LS1001GCB	