

Material. E3, 5, 6, and 7: hot dip galvanized steel  
 C1, M2 and P1: aluminium alloy  
 1, 2, 3 and 4: hot dip galvanized or stainless steel  
 8: stainless steel

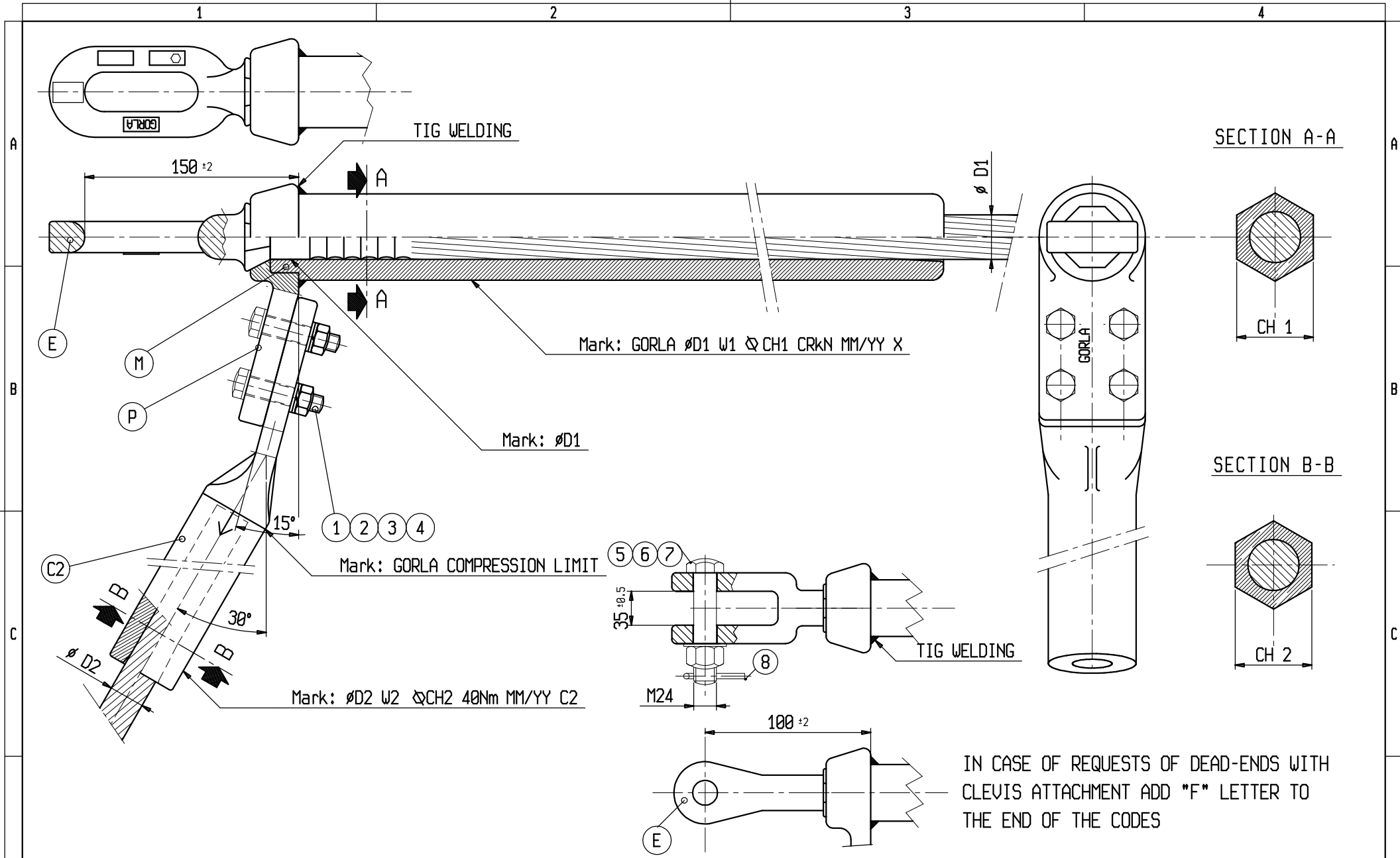
s.r.l. GORLA  
 MORSETTERIE  
 MILANO  
 TECHNICAL OFFICE

COMPRESSION DEAD-END  
 CLAMPS  
 FOR AAC AND AAAC CONDUCTORS  
 WITH 2 BOLTS

Rev.3 dated 15.11.16  
 DRG. N. AT02-2/X

IN CASE OF REQUESTS OF DEAD-ENDS WITH  
 CLEVIS ATTACHMENT ADD "F" LETTER TO  
 THE END OF THE CODES





Material. E, 5, 6 and 7: hot dip galvanized steel  
 C2, M and P: aluminium alloy  
 1, 2, 3 and 4: hot dip galvanized or stainless steel  
 8: stainless steel

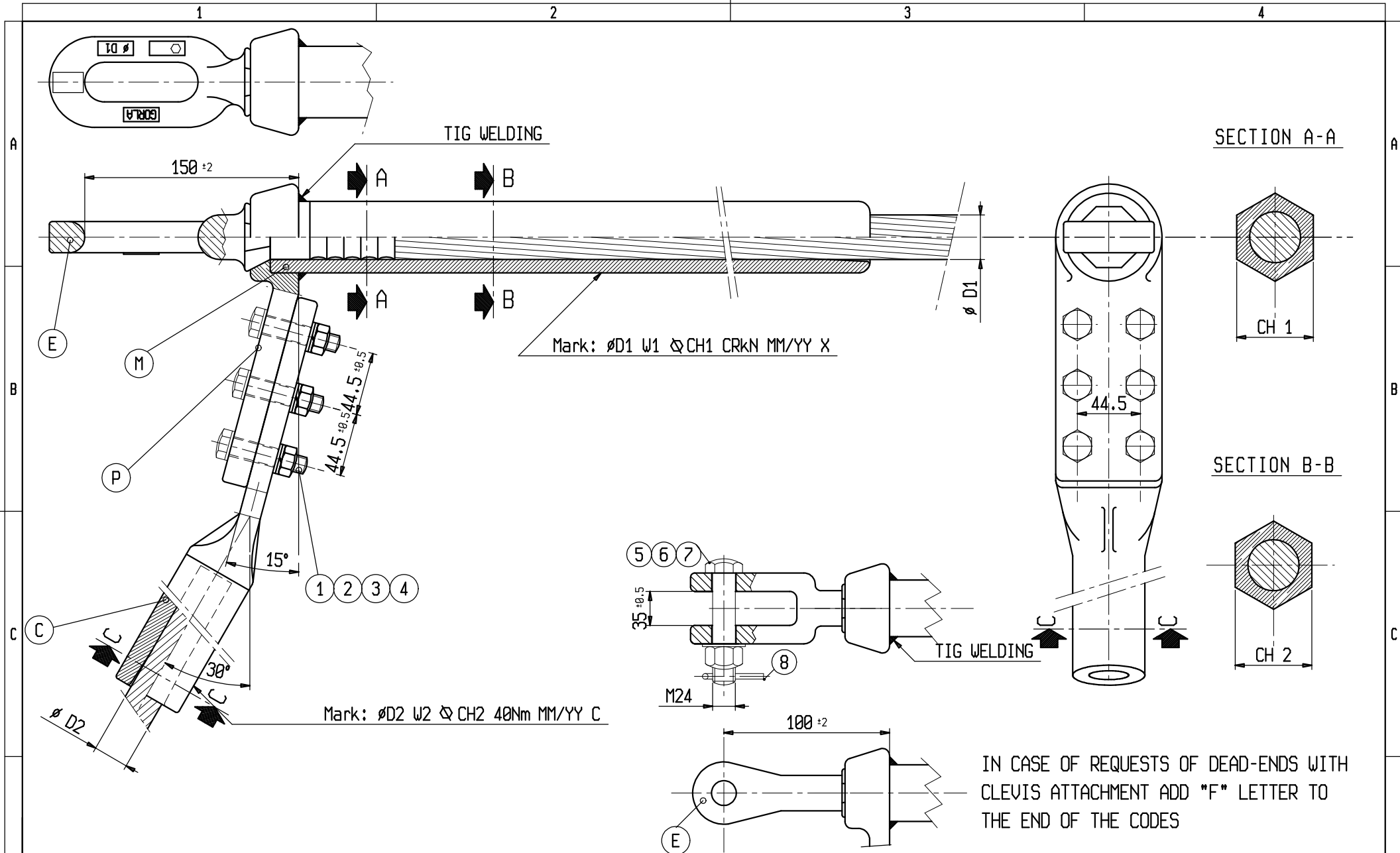
s.r.l. GORLA  
 MORSETTERIE  
 MILANO  
 TECHNICAL OFFICE

COMPRESSION DEAD-END  
 CLAMPS  
 FOR AAC AND AAAC CONDUCTORS  
 WITH 4 BOLTS

Rev. 4 del 15.11.16  
 DRG. N. AT02-4/X

IN CASE OF REQUESTS OF DEAD-ENDS WITH  
 CLEVIS ATTACHMENT ADD "F" LETTER TO  
 THE END OF THE CODES





Material. E, 5, 6 and 7: hot dip galvanized steel  
 C2, M and P: aluminium alloy  
 1, 2, 3 and 4: hot dip galvanized or stainless steel  
 8: stainless steel

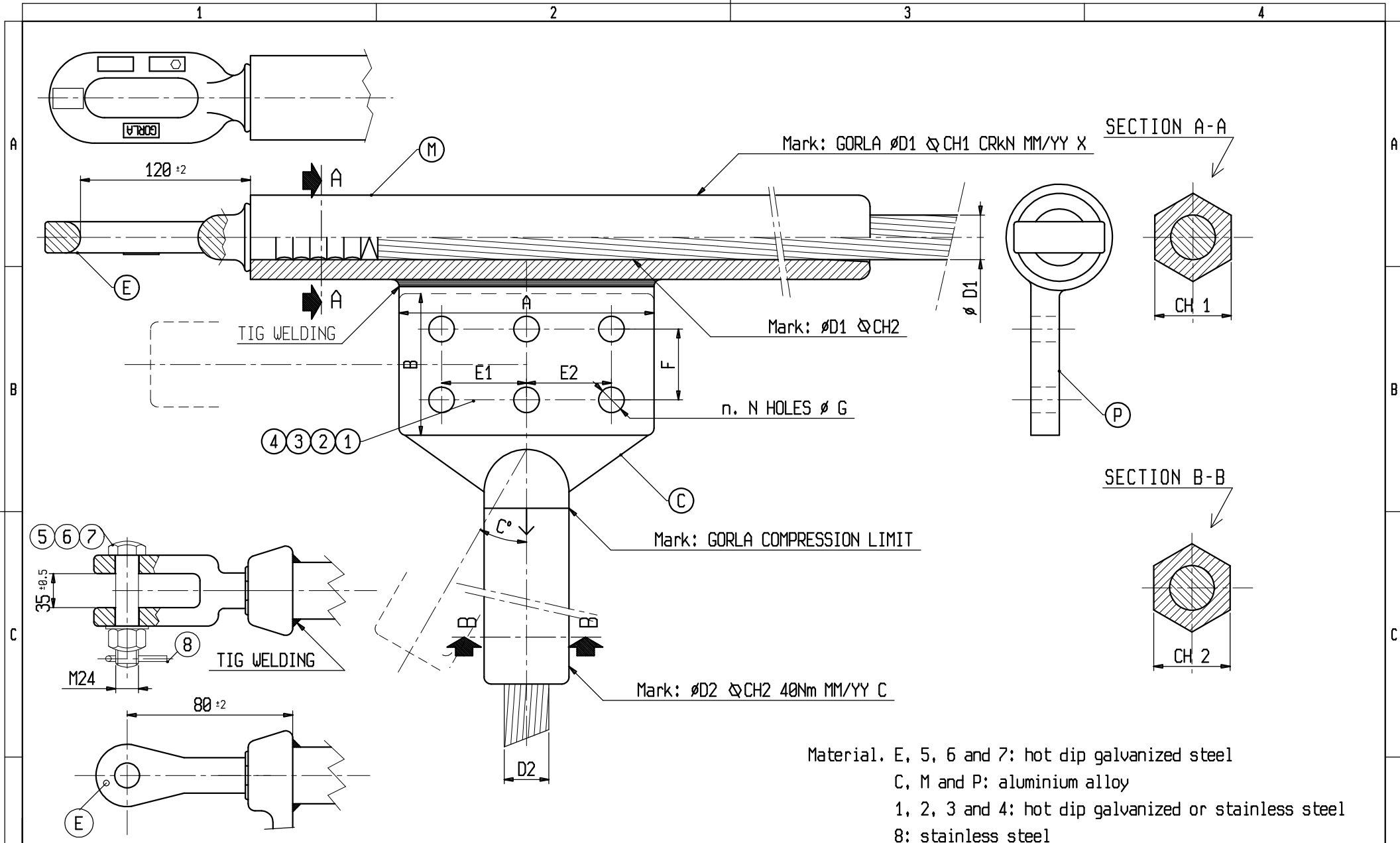
IN CASE OF REQUESTS OF DEAD-ENDS WITH  
 CLEVIS ATTACHMENT ADD "F" LETTER TO  
 THE END OF THE CODES

s.r.l. GORLA  
 MORSETTERIE  
 MILANO  
 TECHNICAL OFFICE

COMPRESSION DEAD-END  
 CLAMPS  
 FOR AAC AND AAC CONDUCTORS  
 WITH 6 BOLTS

Page 1/2  
 Rev 0 dated 06.04.16  
 DIS. N. AT02-6/X





Material. E, 5, 6 and 7: hot dip galvanized steel  
 C, M and P: aluminium alloy  
 1, 2, 3 and 4: hot dip galvanized or stainless steel  
 8: stainless steel

IN CASE OF REQUESTS OF DEAD-ENDS WITH  
 CLEVIS ATTACHMENT ADD "F" LETTER TO  
 THE END OF THE CODES

s.r.l. GORLA MORSETTERIE MILANO TECHNICAL OFFICE	COMPRESSION DEAD-END CLAMPS FOR AAC AND AAAC CONDUCTORS WITH LONGITUDINAL JUMPER	Rev.1 dated 14.03.19 DRG. N. AT02-AL/X
---	--	---

s.r.l. GORLA  
MORSETTERIE  
MILANO

TECHNICAL OFFICE

COMPRESSION DEAD-END  
CLAMPS  
FOR AAC AND AAAC CONDUCTORS  
WITH LONGITUDINAL JUMPER

DRG. N. AT02-AL/X

Rev. 1 dated 14.03.19

X	∅ COND.		A	B	C	E1	E2	F	G	N	CR [kN]
	D1	D2									
LS6450L2F	36,00	36,00	80	100	30	-	-	44,5	13,5	2	109

\*\* = HTLS conductors